

27  
Preston's

Twenty four COUNTRY DANCES for the Year 1803  
with proper Tunes and Directions to each Dance  
as they are performed at  
COURT, BATH, and all PUBLIC ASSEMBLIES.

London. Printed, & sold by Tho. Preston at his Wholesale Warehouse, 57, Strand  
Where may be had,

Gudd's annual collection of 14 favorite Cotillions & Country Dances, with their Proper Figures  
adapted for the Harpsichord or Harp, humbly dedicated to the Nobility & Gentry

John M. P. ... has made in his Book

20

Amherst

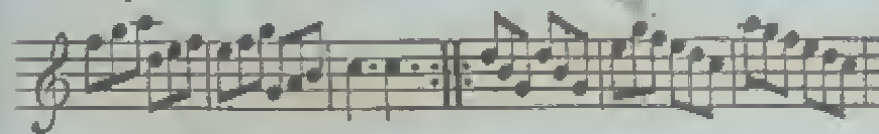
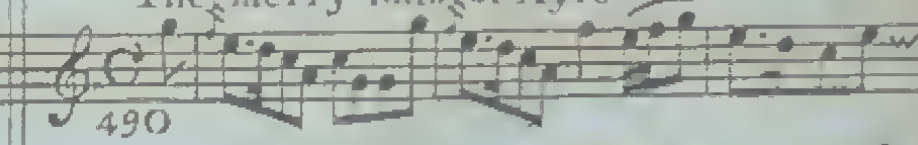
1844

H. P. ...

## The blessings of Peace



## The merry lads of Ayre



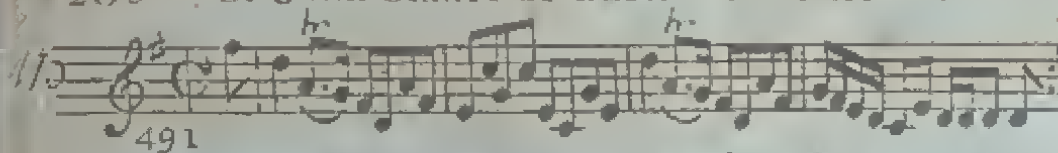
1<sup>st</sup> Lady set & turn the 2<sup>d</sup> Gent<sup>n</sup> with the right  
 hand then with the left hand, the 1<sup>st</sup> Gent<sup>n</sup> at  
 2<sup>o</sup> turn the 2<sup>d</sup> Lady, lead

Cast off 2 Cu. & back again<sup>e</sup>.

back again, lead down the middle &  
 foot it with your Partner & hands 6 round.

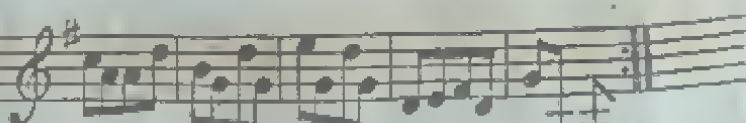
Set & change sides, then hands across & back  
 again, lead down the middle Allemande and  
 turn corners.

206

S<sup>r</sup> John Stuart of Gartallic's Rant: 30

1<sup>st</sup> Gent<sup>n</sup> follow his part<sup>r</sup> half round the 2<sup>d</sup> Cu. set & return to their places at top, lead down the middle & Pousette with the 2<sup>d</sup> Cu. at top.

## The lads of Glasgow



1<sup>st</sup> Cu. hands 3 round with the 1<sup>st</sup> adv. then with her part<sup>r</sup> middle & Allemande

Speed the Plough

Duchess of York's Waltz

Handwritten musical notation for two dances. The first dance, 'Speed the Plough', is in 2/4 time and consists of four staves of music. The second dance, 'Duchess of York's Waltz', is in 3/4 time and also consists of four staves of music. The notation is in treble clef and includes various note values, rests, and bar lines.

Cast off 2 Cu. & back again, hands across & back again, lead down the middle & up again, foot it with your Partner & hands 6 round.

1<sup>st</sup> Lady change places with the 2<sup>d</sup> Gent<sup>l</sup> the 1<sup>st</sup> Gent<sup>l</sup> do the same with the 2<sup>d</sup> Lady, lead down the middle foot it & Allemande, hands 6 round, back again & swing corners.

208

## Duke of Clarence's Waltz

3/2

Musical notation for 'Duke of Clarence's Waltz' in 3/2 time. The piece consists of four staves of music. The first staff begins with a treble clef, a key signature of one sharp (F#), and a common time signature (C). The tempo is marked '495'. The first staff has a dynamic marking of *f*. The second staff has a dynamic marking of *f*. The third staff has a dynamic marking of *f*. The fourth staff has a dynamic marking of *f*. The piece ends with a double bar line.

Set to the 2<sup>d</sup> Lady & hands 3 round, the same with the Gent<sup>n</sup> lead down the middle up again right & left at top, swing corners hands across below, Allemand.

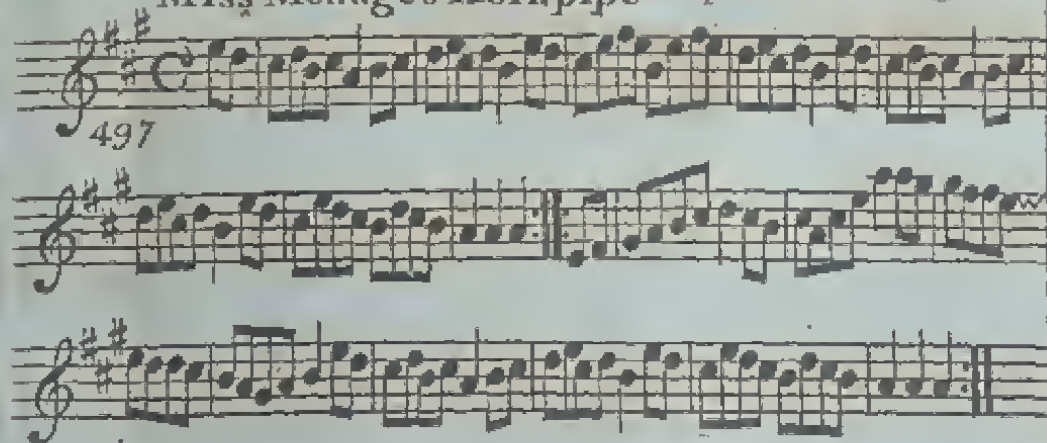
## This is not my own house

Musical notation for 'This is not my own house' in 3/2 time. The piece consists of four staves of music. The first staff begins with a treble clef, a key signature of one sharp (F#), and a common time signature (C). The tempo is marked '496'. The first staff has a dynamic marking of *f*. The second staff has a dynamic marking of *f*. The third staff has a dynamic marking of *f*. The fourth staff has a dynamic marking of *f*. The piece ends with a double bar line.

1<sup>st</sup> Gent<sup>n</sup> lead the 2<sup>d</sup> Lady down the middle, then to her own place, the 1<sup>st</sup> Lady do the same with the 2<sup>d</sup> Gent<sup>n</sup> 1<sup>st</sup> Gent<sup>n</sup> lead his partner down the middle & Poussette.

## Miss Menage's Hornpipe

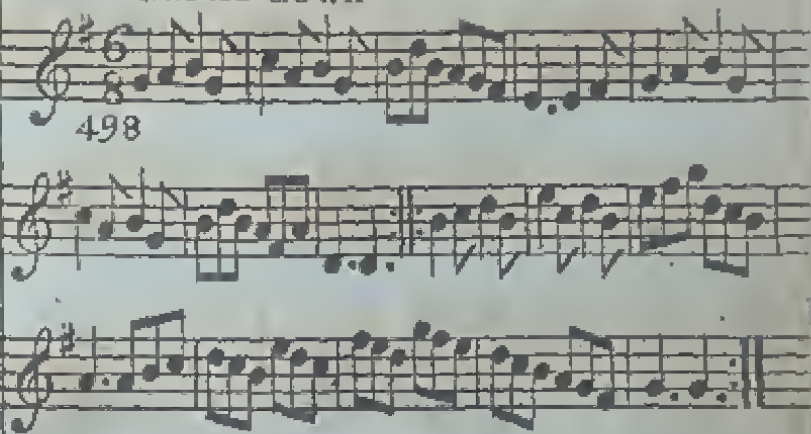
4 38



1.<sup>st</sup> Lady set outsides with 2.<sup>d</sup> & 3.<sup>d</sup> Gent.<sup>n</sup> 1.<sup>st</sup>  
Gent.<sup>n</sup> do the same with the Ladies, lead down  
the middle, turn corners & lead outsides.

## Castle down

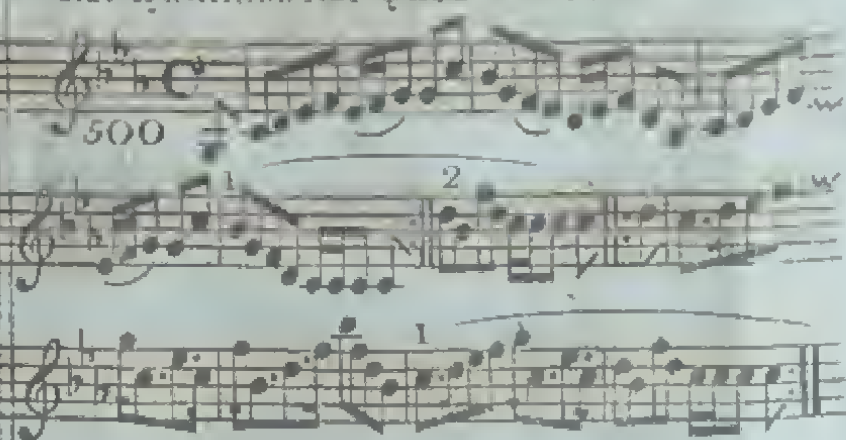
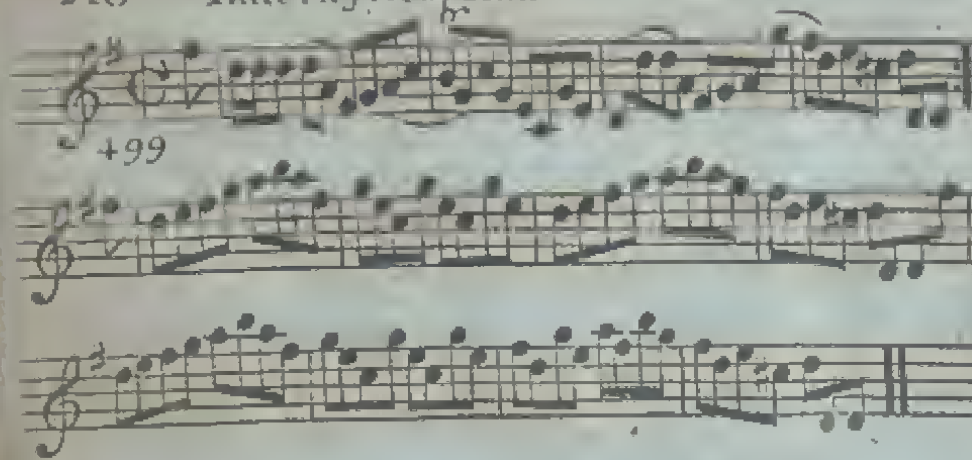
209



1.<sup>st</sup> Cu. set & turn with both hands, foot  
it outsides, lead down the middle, up  
again & cast off.

## 210 Indermayie's Rant

34

M<sup>r</sup> Dundass M<sup>c</sup> Queen's Reel

Set & half right & left & back again, lead  
down the middle swing corners and lead  
thro' the 8<sup>d</sup> & 2<sup>d</sup> Cu<sup>s</sup>.



Cast off 2 Cu<sup>s</sup> down the middle twice. Alle-  
mande, turn corners & le 4 outside.



Lady Margaret Stewart's Reel

Paddy O Flanagan

218

The image shows two pages of musical notation. The left page is titled "Lady Margaret Stewart's Reel" and the right page is titled "Paddy O Flanagan". Both are in 2/4 time. The left page has a page number "505" and the right page has "506". The notation consists of four staves of music on each page, written in treble clef. The music is a reel, characterized by its rhythmic and melodic structure. There are some markings above the notes, possibly indicating fingerings or ornaments.

Set & change sides, back again, lead  
down the middle Poussente.

1<sup>st</sup> & 2<sup>d</sup> Cu. set & hands across & back again.  
lead down the middle up again, Allemande,  
swing corners.

214 Mad.<sup>m</sup> Buonaparte's Walz

150

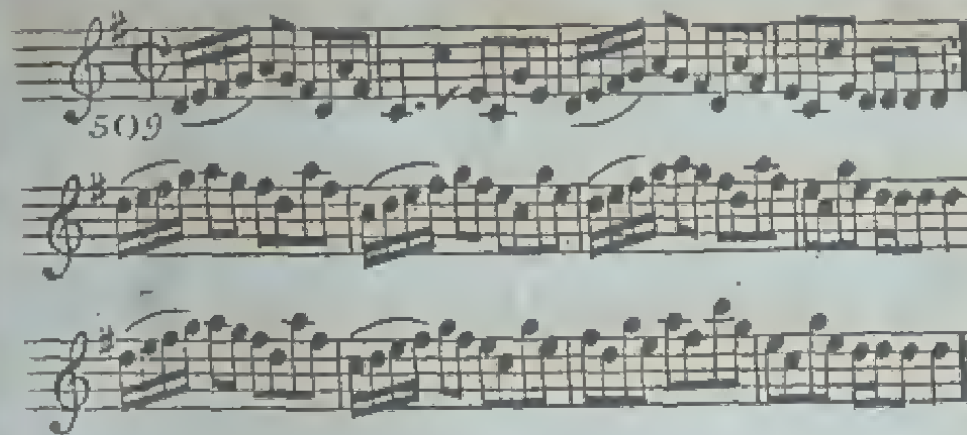
Duplin House

Hands across & back again, cast off one Cu. & hands 4 round, turn your part? Poussette quite round the top Cu.

Set & half right & left & back again, lead down the middle up again and hands 4 round at top.

Lord Albermarle's Reel

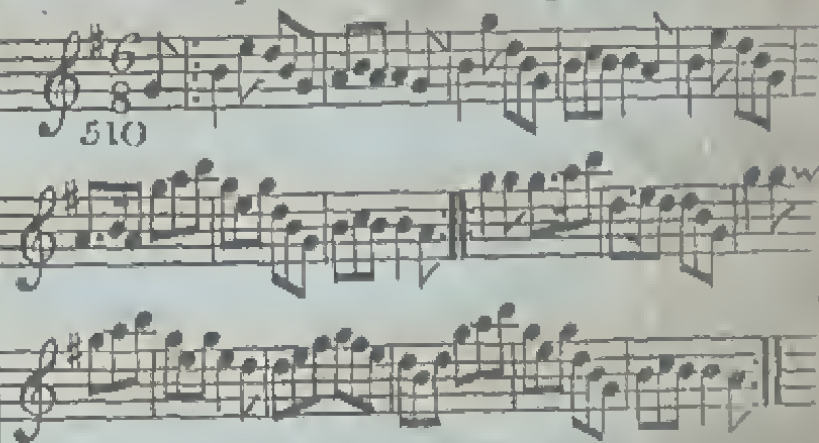
39



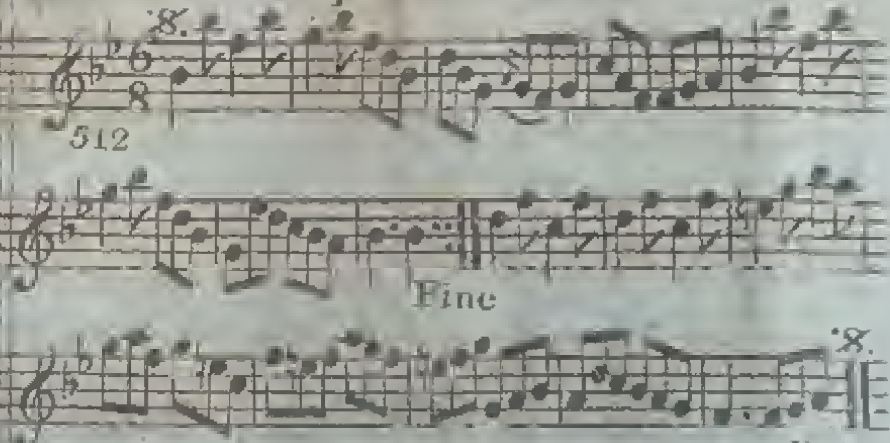
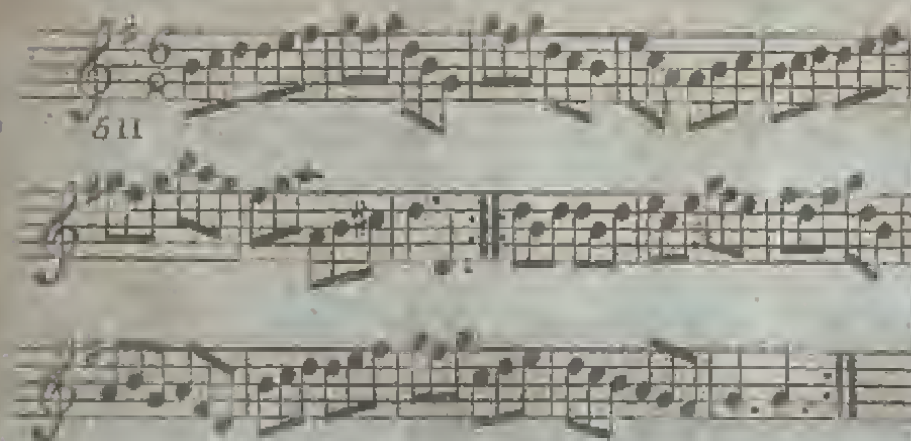
Set & change sides, back again, hands across & back again, lead down the middle swing corners & lead outsides.

The Campbells are coming

215



Hands 3 round on the Lady's side, then on the Gent<sup>s</sup> lead down the middle, up again, right & left at top.



D.C.

Set & half right & left, the same back again,  
lead down the middle & Allemande.

Cast off 2 Cu. up again, cross over & turn  
your part<sup>r</sup> & right & left.